

INTERNAL FIT WALL KIT RANGE

Installation Instructions

Models

White

Brown

White with Shutter

Brown with Shutter



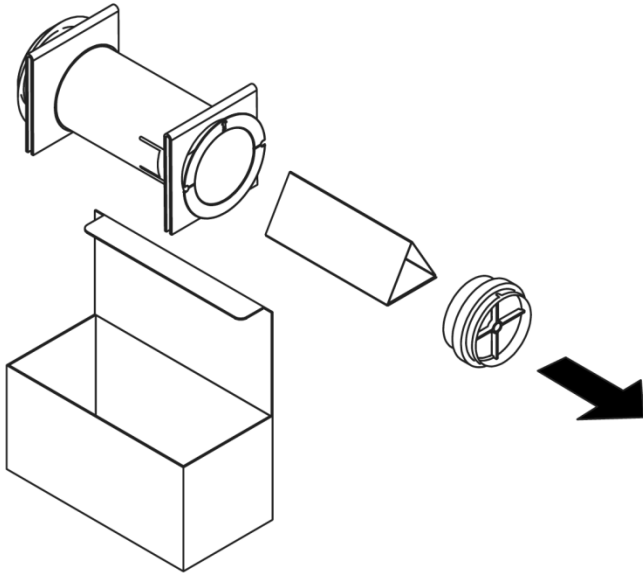
Please read these instructions carefully before commencing installation.

Please retain these instructions with the product.

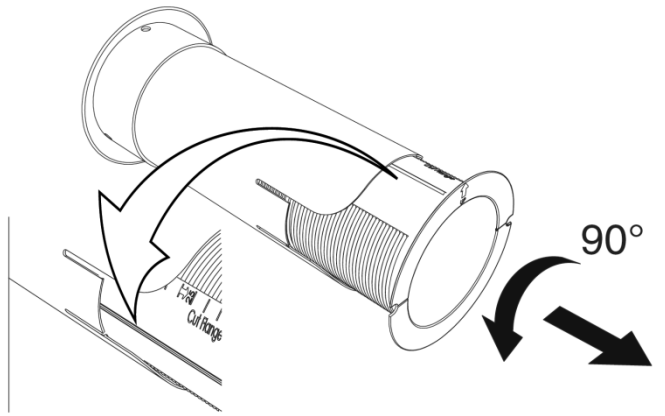


Step 1

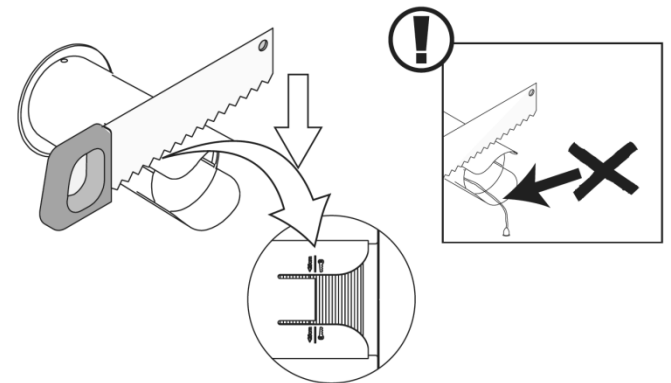
Open box, gently slide the back-draught shutter out of the pipe (Shutter versions only). Remove folded push piece.



Step 4



Step 5

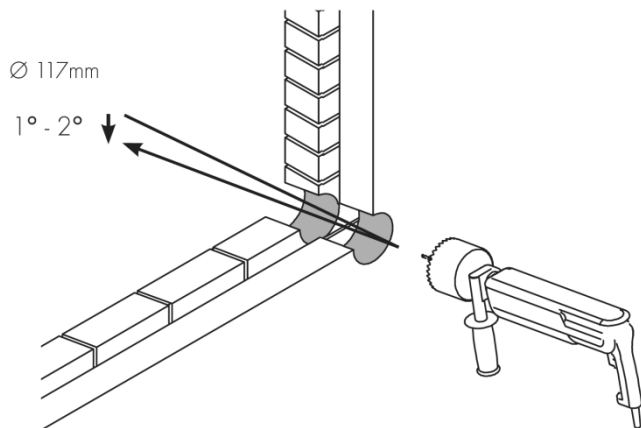


Step 6



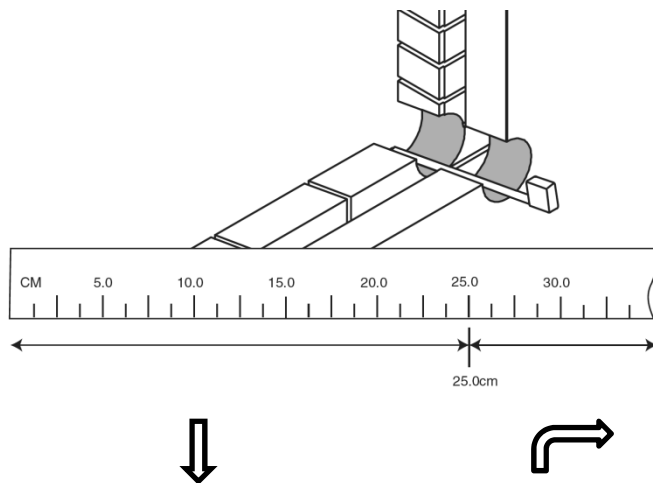
Step 2

Drill hole 117mm diameter angled downwards 1° - 2° all the way through wall to outside.



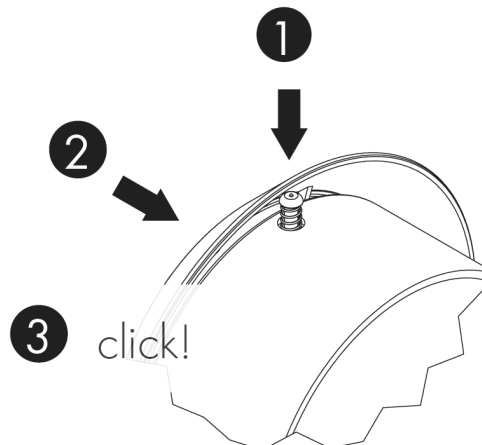
Step 3

Measure hole and note length, if deeper than 25cm, go to step 5. If shorter than 25cm, trim the outer pipe's ears - go to steps 3 + 4.



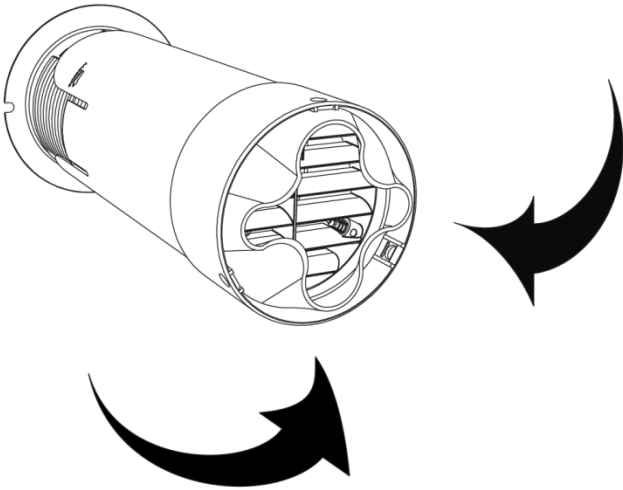
Step 7

1. Push the locking pin down.
2. Push the grille inwards so the head of the locking pin is under the outer pipe.
3. When it CLICKS! It is in place.
4. Repeat for each one of the three pins.



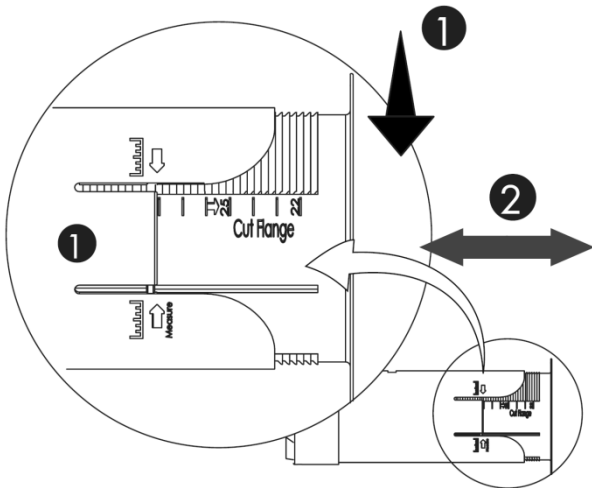
Step 8

Fold seal inwards, push grille and seal into tube.



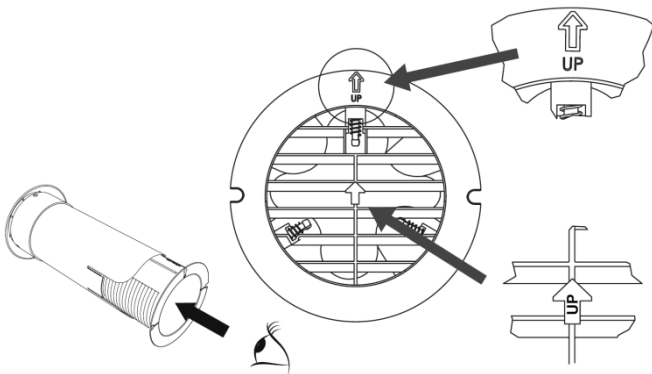
Step 9

1. Rotate inner tube until the ridge lines up with slot.
2. Slide inner tube in or out to match depth of hole measured in step 2.



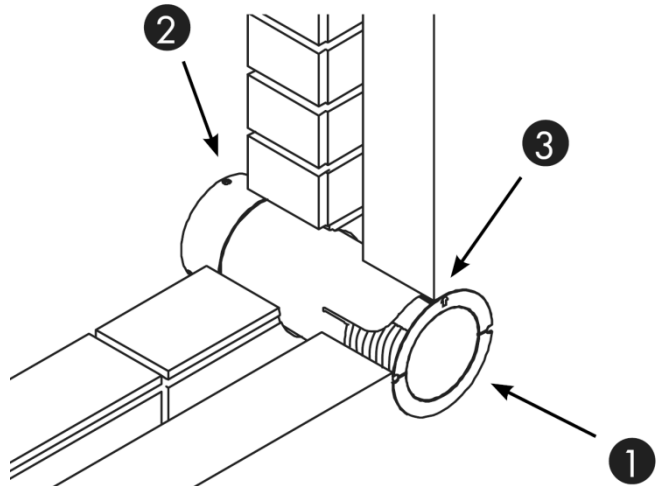
Step 10

Look down pipe and check that the two arrows are lined up and both facing upwards.



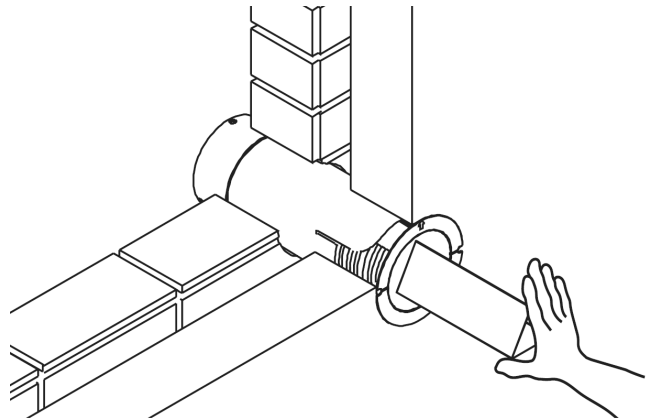
Step 11

1. Push wall kit through wall.
2. Ensure locking pins are outside wall.
3. Check arrow is at top.

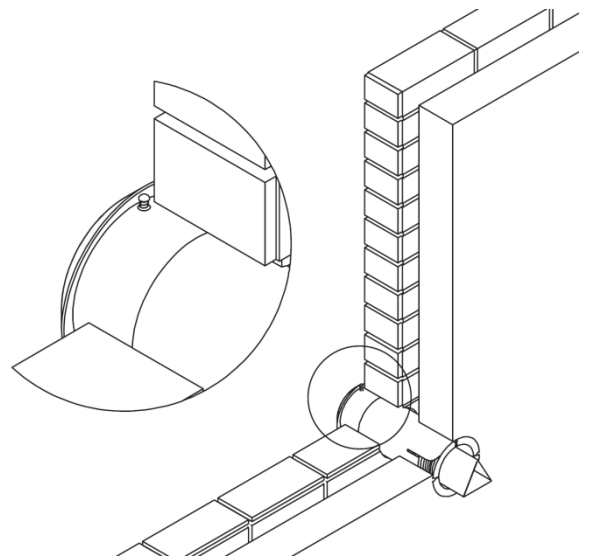


Step 12

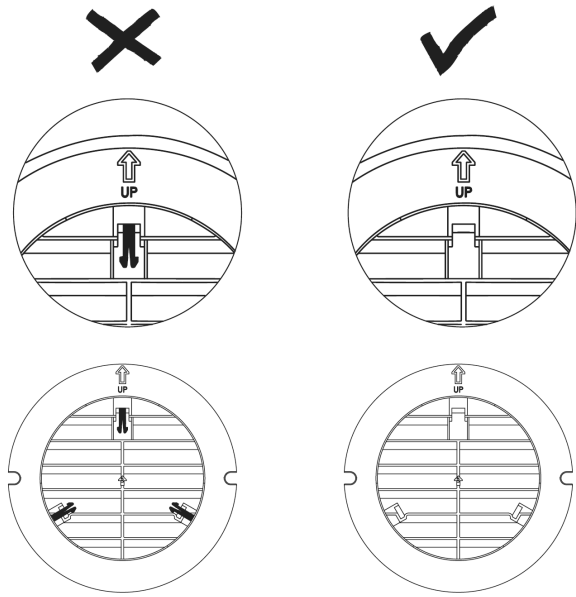
Insert folded cardboard into duct and gently push. The seal will pop out and unfold, the locking pins will extend. Stop pushing when you hear the CLICK! Of the locking pins – see Step 14. Check arrow is at top.



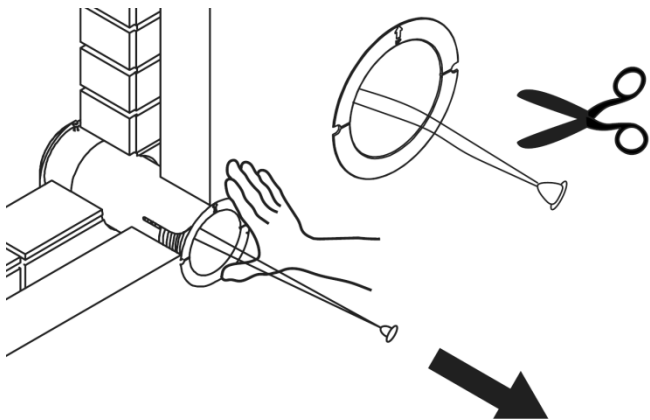
Step 13



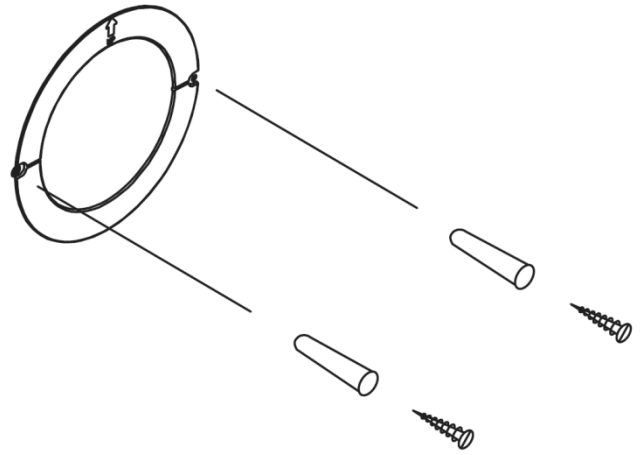
Step 14
Check all 3 pins are out.



Step 15
Hold duct flange firmly against the wall. Using the toggle pull to ensure wall kit is tight in the hole.



Step 16
Using supplied screws and rawl plugs attach flange to wall.



Step 17
(Shutter models only)

