

The Single Models

SENT100S & SENT100S/CP

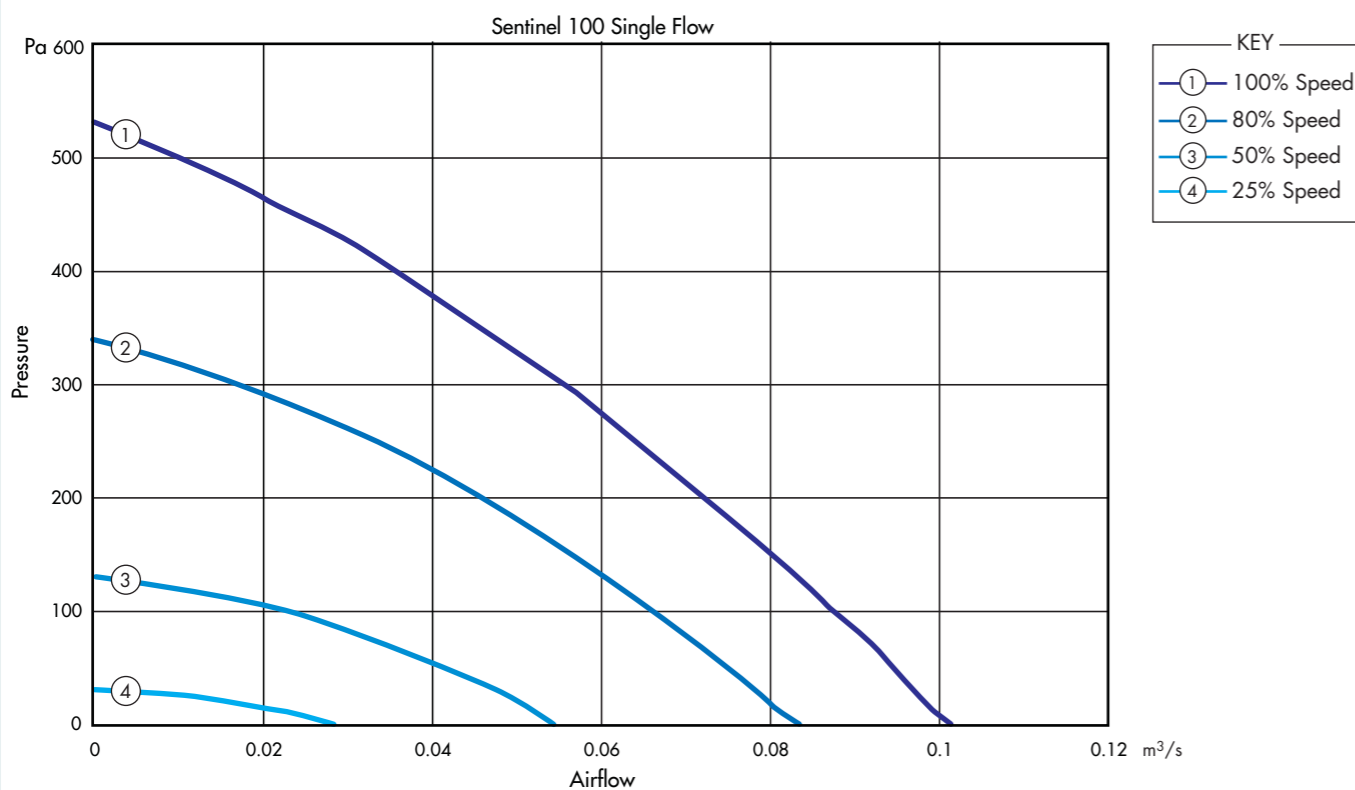


Performance Guide

Speed	Phase	Performance	Airflow, m ³ /s @ Pa														Amps FLC
			0	25	50	100	125	150	200	250	300	350	375	400	450	500	
100%	1	Airflow	0.101	0.097	0.094	0.087	0.084	0.08	0.072	0.064	0.056	0.046	0.041	0.036	0.024	0.011	0.72
		SFP	0.84	0.88	0.90	0.98	1.01	1.06	1.18	1.33	1.52	1.85	2.07	-	-	-	
80%	1	Airflow	0.083	0.079	0.075	0.066	0.061	0.056	0.046	0.033	0.018						0.50
		SFP	0.46	0.48	0.51	0.58	0.62	0.68	0.83	1.15	2.11						
50%	1	Airflow	0.054	0.048	0.041	0.023	0.008										0.15
		SFP	0.33	0.38	0.44	0.78	2.75										
25%	1	Airflow	0.028	0.013												0.08	
		SFP	0.21	0.46													

Sound Data

Speed	Test Mode	Octave Band Frequency SWL								dB(A) @3m
		63	125	250	500	1k	2k	4k	8k	
100%	Inlet	57.2	68.7	68	70.1	59.4	53.1	47.3	41.8	42.5
	Outlet	54.9	67.7	70	70.5	68.1	64.6	57.7	49.5	49.3
	Breakout	58.7	63.8	63.3	63	54.8	51.2	46.4	42.1	42.2
80%	Inlet	52.2	63.7	63	65.1	54.3	48.1	42.3	36.8	37.5
	Outlet	50.1	62.9	65.1	65.6	63.2	59.7	52.9	44.6	44.5
	Breakout	53.8	58.9	58.5	58.2	49.9	46.4	41.5	37.2	37.3
50%	Inlet	42.2	53.7	52.9	55.1	44.3	38.1	32.3	26.8	27.5
	Outlet	39.9	52.7	54.9	55.4	53	49.5	42.7	34.4	34.3
	Breakout	43.6	48.7	48.3	48	39.7	36.2	31.4	27	27.1
25%	Inlet	27.1	38.6	37.9	40	29.2	23	17.2	11.7	12.4
	Outlet	24.8	37.6	39.9	40.4	37.9	34.5	27.6	19.4	19.2
	Breakout	28.6	33.7	33.2	32.9	24.7	21.1	16.3	11.9	12.1



SENT125S & SENT125S/CP

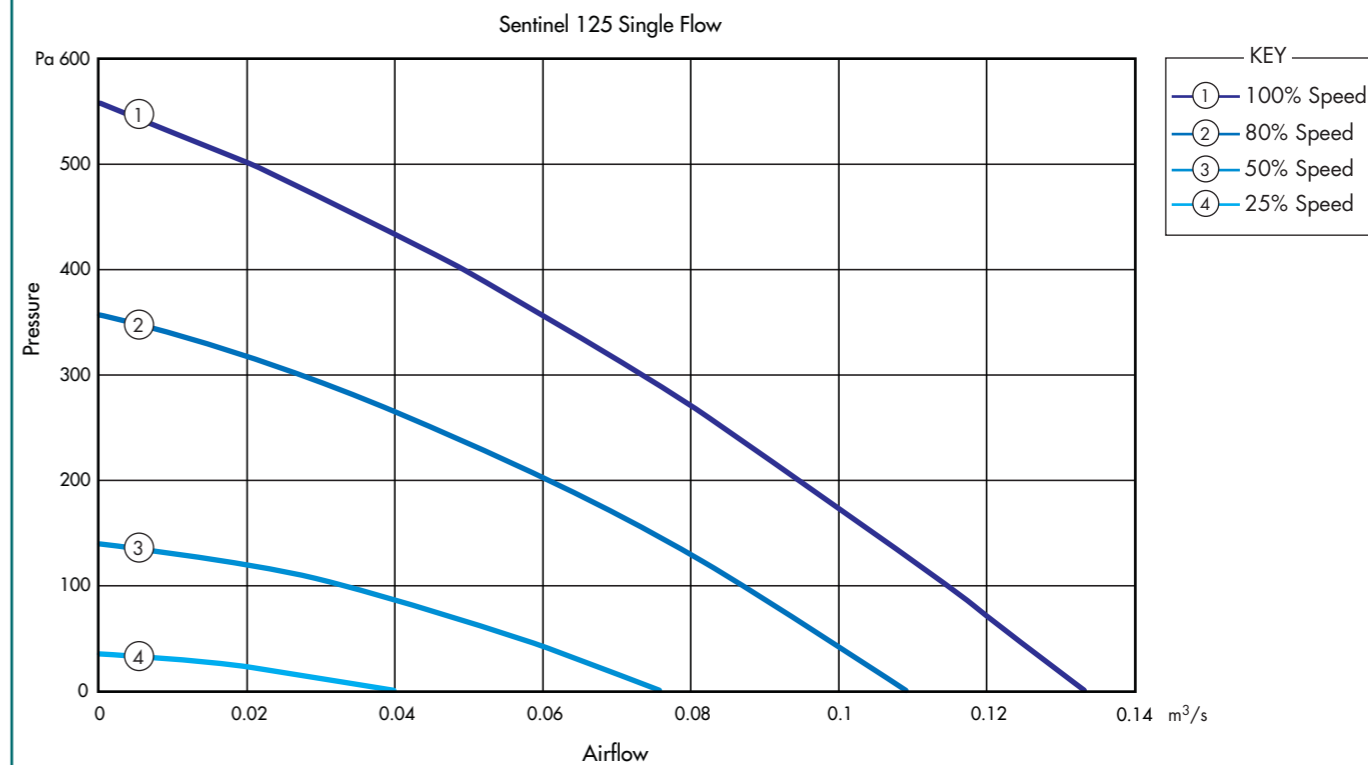


Performance Guide

Speed	Phase	Performance	Airflow, m ³ /s @ Pa														Amps FLC
			0	25	50	100	125	150	200	250	300	350	400	450	500	550	
100%	1	Airflow	0.133	0.129	0.124	0.115	0.11	0.105	0.095	0.084	0.073	0.068	0.061	0.049	0.035	0.02	0.72
		SFP	0.64	0.66	0.69	0.74	0.77	0.81	0.89	1.01	1.16	1.25	1.39	1.73	2.43	-	
80%	1	Airflow	0.109	0.104	0.099	0.087	0.081	0.075	0.061	0.045	0.027	0.016	0.003				0.51
		SFP	0.35	0.37	0.38	0.44	0.47	0.51	0.62	0.84	1.41	2.38	-				
50%	1	Airflow	0.075	0.066	0.057	0.033	0.015										0.18
		SFP	0.29	0.33	0.39	0.67	1.47										
25%	1	Airflow	0.04	0.019												0.09	
		SFP	0.35	0.74													

Sound Data

Speed	Test Mode	Octave Band Frequency SWL								dB(A) @3m
		63	125	250	500	1k	2k	4k	8k	
100%	Inlet	57.9	68.5	68.3	70.5	62.4	57.3	50.8	45.5	44.5
	Outlet	58.7	68.4	69.6	74.2	69.7	67.2	61.9	53.7	51.9
	Breakout	56.3	59.2	63.4	62.8	56.5	52.1	45.2	38.2	42.3
80%	Inlet	53.1	63.6	63.4	65.7	57.6	52.4	46	40.6	39.7
	Outlet	53.9	63.6	64.7	69.4	64.9	62.4	57.1	48.8	47.1
	Breakout	51.5	54.3	58.6	58	51.6	47.3	40.4	33.3	37.5
50%	Inlet	42.9	53.4	53.3	55.5	47.4	42.2	35.8	30.4	29.5
	Outlet	43.7	53.4	54.5	59.2	54.7	52.2	46.9	38.6	36.9
	Breakout	41.3	44.1	48.4	47.8	41.4	37.1	30.2	23.1	27.3
25%	Inlet	27.8	38.3	38.2	40.4	32.3	27.2	20.8	15.4	14.4
	Outlet	28.6	38.3	39.4	44.1	39.6	37.1	31.8	23.6	21.8
	Breakout	26.2	29.1	33.3	32.7	26.4	22	15.1	8.1	12.2



The Single Models

SENT150S & SENT150S/CP

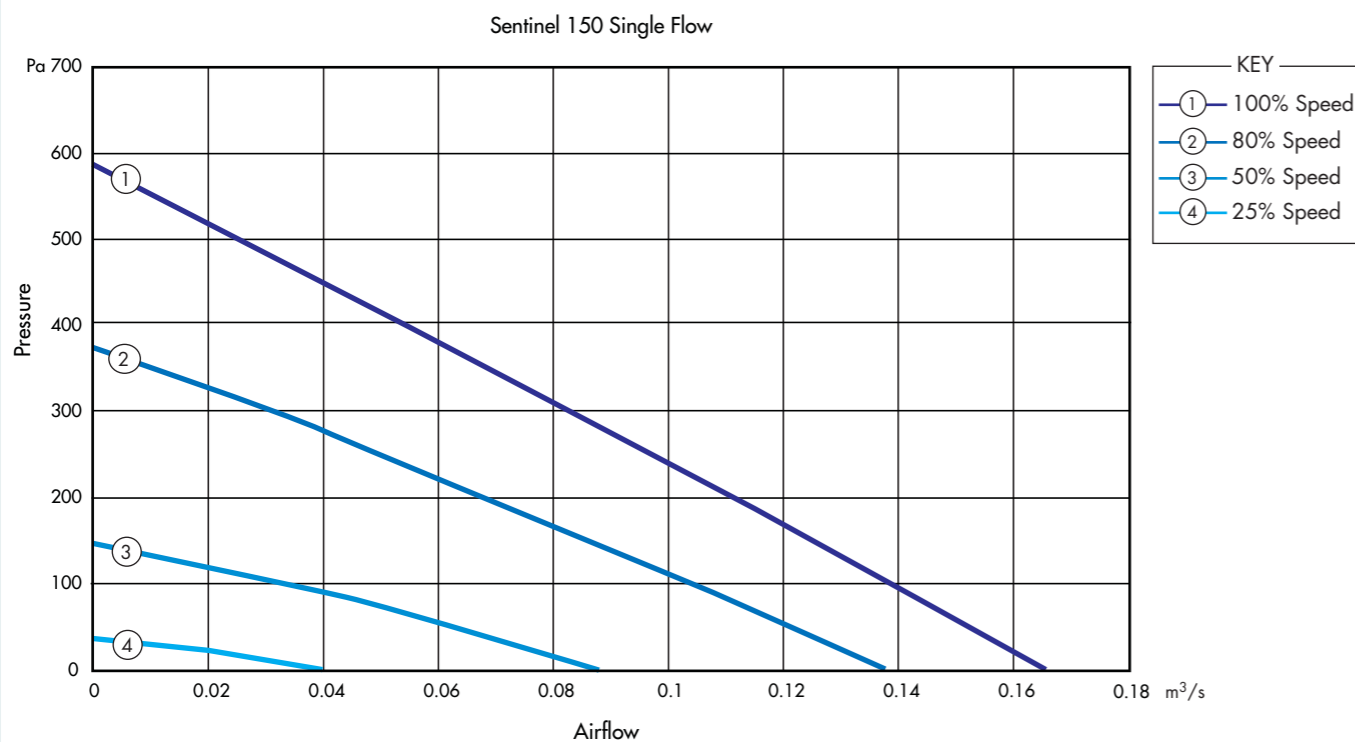


Performance Guide

Speed	Phase	Performance	Airflow, m ³ /s @ Pa													Amps FLC	
			0	25	50	100	125	150	200	250	300	350	400	450	500		550
100%	1	Airflow	0.166	0.159	0.152	0.138	0.131	0.124	0.111	0.096	0.082	0.068	0.054	0.039	0.025	0.011	0.74
		SFP	0.52	0.55	0.57	0.63	0.66	0.70	0.78	0.91	1.06	1.28	1.61	2.23	-	-	
80%	1	Airflow	0.138	0.129	0.121	0.104	0.096	0.087	0.069	0.05	0.031	0.011					0.48
		SFP	0.28	0.30	0.32	0.38	0.41	0.45	0.57	0.78	1.26	3.55					
50%	1	Airflow	0.088	0.075	0.063	0.033	0.016										0.16
		SFP	0.24	0.28	0.33	0.64	1.31										
25%	1	Airflow	0.04	0.015												0.08	
		SFP	0.18	0.47													

Sound Data

Speed	Test Mode	Octave Band Frequency SWL								dB(A) @3m
		63	125	250	500	1k	2k	4k	8k	
100%	Inlet	60	71.5	74	75.2	66.6	61.5	53.6	50	49.8
	Outlet	60.2	71.5	73.8	73.8	73.1	70.4	64.6	57.4	55
	Breakout	55.8	58.3	62.8	63.9	58	54.4	47	39.6	43.5
80%	Inlet	55.1	66.7	69.1	70.3	61.8	56.7	48.8	45.2	45
	Outlet	55.3	66.7	68.9	68.9	68.3	65.6	57.3	52.5	50.1
	Breakout	50.9	53.5	57.9	59.1	53.1	49.6	42.2	34.7	38.6
50%	Inlet	44.9	56.4	58.9	60.1	51.5	46.5	38.6	35	34.8
	Outlet	45.1	56.5	58.7	58.7	58.1	55.3	47.1	42.3	39.9
	Breakout	40.7	43.3	47.7	48.9	42.9	39.4	31.9	24.5	28.4
25%	Inlet	29.9	41.4	43.9	45.1	36.5	31.4	23.6	20	19.7
	Outlet	30.1	41.4	43.7	43.7	43.1	40.3	32.1	27.3	24.9
	Breakout	25.7	28.2	32.7	33.8	27.9	24.3	16.9	9.4	13.4



SENT200S & SENT200S/CP

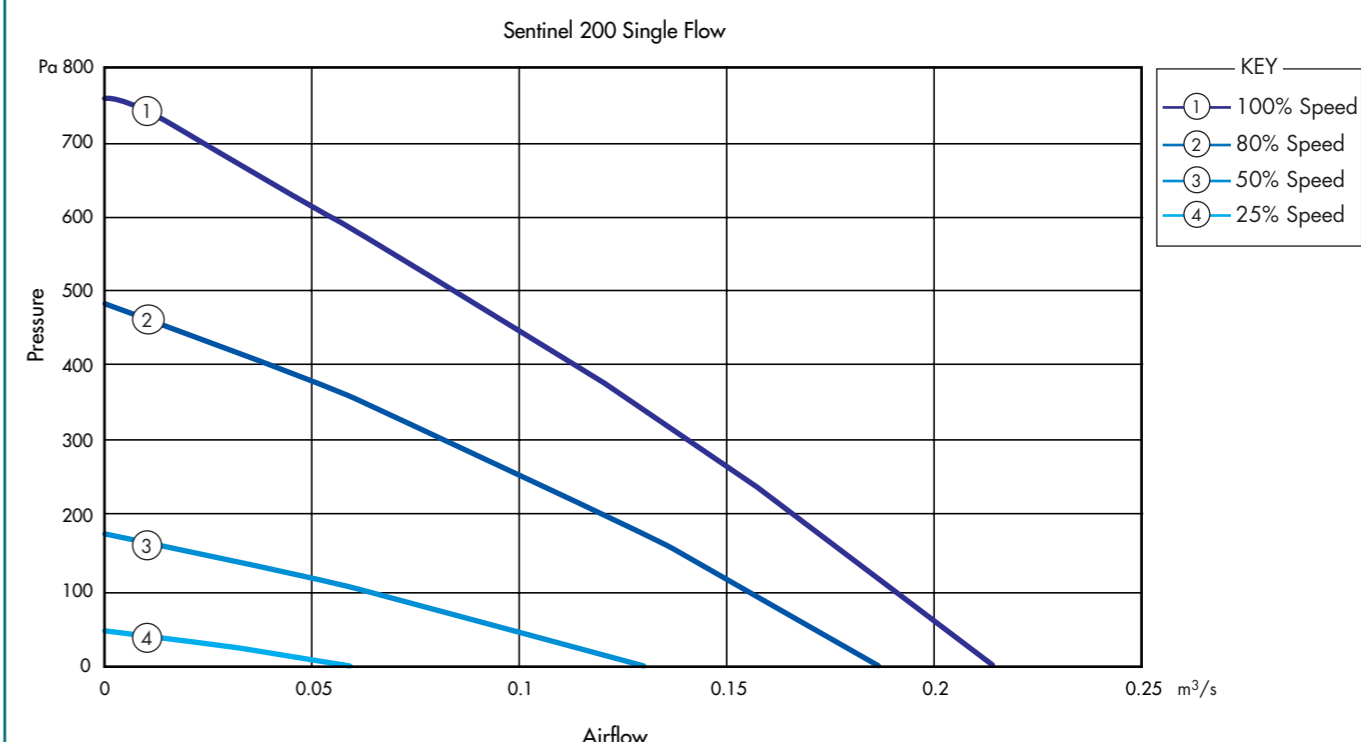


Performance Guide

Speed	Phase	Performance	Airflow, m ³ /s @ Pa													Amps FLC	
			0	25	50	100	150	200	250	300	350	400	450	500	600		700
100%	1	Airflow	0.214	0.208	0.202	0.19	0.178	0.166	0.154	0.141	0.128	0.114	0.099	0.085	0.07	0.054	0.72
		SFP	0.81	0.83	0.86	0.91	0.97	1.04	1.12	1.23	1.35	1.52	1.75	2.04	-	-	
80%	1	Airflow	0.186	0.178	0.171	0.154	0.138	0.121	0.103	0.083	0.063	0.041	0.017				0.50
		SFP	0.47	0.49	0.51	0.56	0.63	0.72	0.84	1.05	1.38	2.12	-				
50%	1	Airflow	0.13	0.115	0.099	0.064	0.023										0.16
		SFP	0.23	0.25	0.30	0.46	1.27										
25%	1	Airflow	0.059	0.031												0.08	
		SFP	0.15	0.28													

Sound Data

Speed	Test Mode	Octave Band Frequency SWL								dB(A) @3m
		63	125	250	500	1k	2k	4k	8k	
100%	Inlet	65.4	74.3	75.1	76.2	70.9	65.2	63.7	57	52.9
	Outlet	66.2	74.4	73.7	81.2	78.5	79.2	74.9	68	62.9
	Breakout	63.5	61.9	63.3	68.7	63.1	63.3	55.2	41.7	49
80%	Inlet	60.6	69.4	70.3	71.3	66	60.4	58.9	52.2	48.1
	Outlet	61.3	69.5	68.8	76.3	73.7	74.4	70.1	63.2	58
	Breakout	58.6	57.1	58.4	63.8	58.2	58.4	50.3	36.9	44.2
50%	Inlet	50.4	59.2	60.1	61.1	55.8	50.2	48.7	42	37.9
	Outlet	53.4	60.9	68	64.5	60.7	59.6	56.1	47.7	46.6
	Breakout	49.6	48.2	56	51.8	44.7	42.9	34.5	30.7	32.4
25%	Inlet	35.3	44.2	45	46.1	40.8	35.1	33.7	27	22.8
	Outlet	36.1	44.3	43.6	51.1	48.4	49.1	44.8	37.9	32.8
	Breakout	33.4	31.8	33.2	38.6	33	33.2	25.1	11.6	19



The Single Models

SENT250S & SENT250S/CP

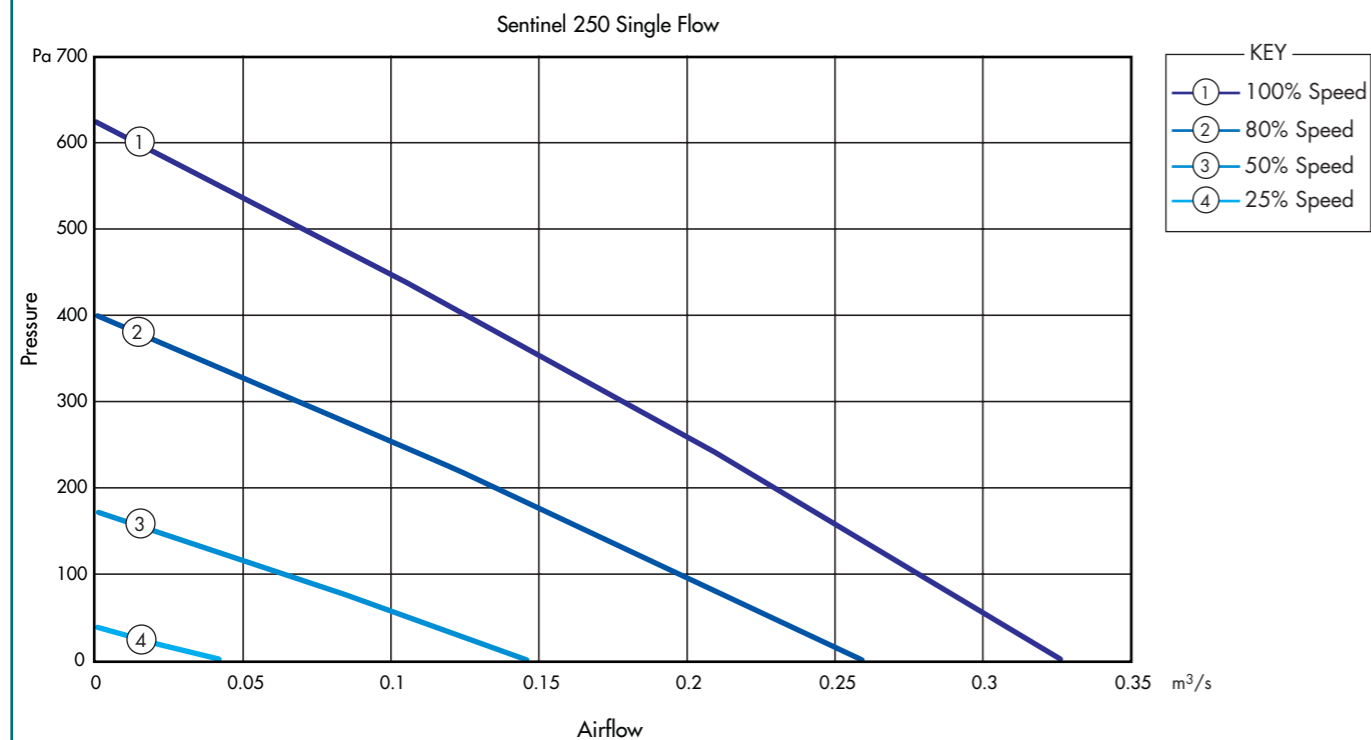


Performance Guide

Speed	Phase	Performance	Airflow, m ³ /s @ Pa													Amps FLC	
			0	25	50	100	150	200	250	300	350	375	400	450	500		550
100%	1	Airflow	0.327	0.315	0.303	0.279	0.254	0.229	0.204	0.178	0.152	0.139	0.125	0.098	0.07	0.042	1.38
		SFP	0.43	0.45	0.47	0.51	0.56	0.62	0.69	0.79	0.93	1.01	1.13	1.44	2.01	-	
80%	1	Airflow	0.259	0.244	0.229	0.198	0.167	0.134	0.102	0.068	0.034	0.016					1.00
		SFP	0.27	0.28	0.30	0.35	0.41	0.51	0.68	1.01	2.03	-					
50%	1	Airflow	0.145	0.124	0.104	0.061	0.017									0.20	
		SFP	0.18	0.21	0.25	0.43	1.53										
25%	1	Airflow	0.041	0.015											0.07		
		SFP	0.17	0.47													

Sound Data

Speed	Test Mode	Octave Band Frequency SWL								dB(A) @3m
		63	125	250	500	1k	2k	4k	8k	
100%	Inlet	66.7	73.4	73.5	79	69.6	64.6	62	58.8	54.1
	Outlet	69	72.9	73.6	78.2	75.5	76.2	70.8	66.7	60.1
	Breakout	63.3	64.7	65.8	69.9	64.1	63.3	52.8	43.3	49.9
80%	Inlet	61.8	68.6	68.7	74.1	64.8	59.8	57.2	53.9	49.3
	Outlet	64.1	68	68.8	73.3	70.7	71.4	66	61.9	55.2
	Breakout	58.5	59.8	61	65.1	59.3	58.5	48	38.4	45
50%	Inlet	51.8	58.5	58.6	64	54.7	49.7	47.1	43.8	39.2
	Outlet	50.5	59.2	65.3	59.1	56.2	57.7	55.1	41.4	43.3
	Breakout	48.5	51.4	59.8	50.7	45.6	44.7	37.1	31.1	33.9
25%	Inlet	36.6	43.3	43.4	48.9	39.6	34.5	31.9	28.6	24
	Outlet	38.9	42.8	43.5	48.1	45.4	46.1	40.7	36.6	30
	Breakout	33.2	34.6	35.7	39.8	34	33.2	22.7	13.2	19.8



SENT315S & SENT315S/CP

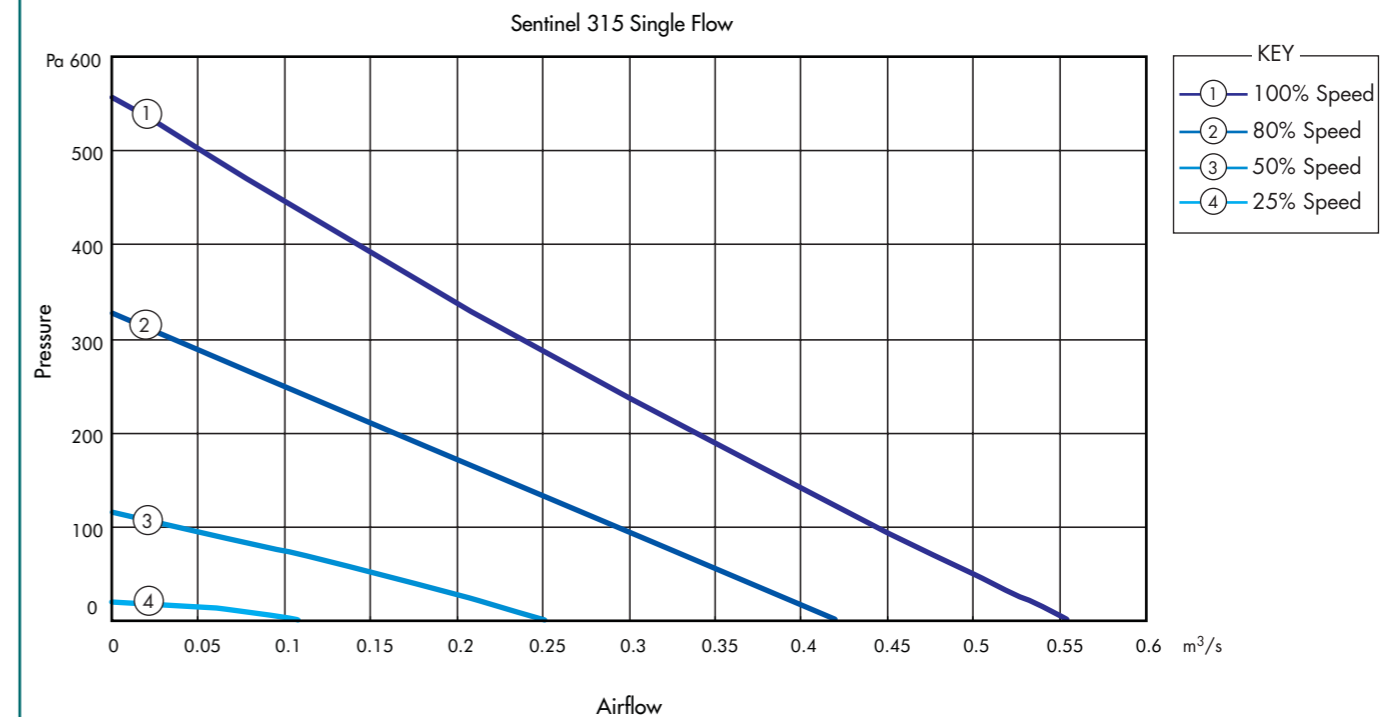


Performance Guide

Speed	Phase	Performance	Airflow, m ³ /s @ Pa													Amps FLC		
			0	25	50	100	150	200	250	300	325	350	400	450	475		500	550
100%	1	Airflow	0.556	0.528	0.499	0.444	0.39	0.338	0.287	0.238	0.213	0.189	0.142	0.096	0.074	0.051	0.007	1.36
		SFP	0.32	0.34	0.35	0.40	0.45	0.52	0.62	0.74	0.83	0.94	1.25	1.84	2.39	-	-	
80%	1	Airflow	0.425	0.389	0.356	0.291	0.226	0.162	0.099	0.036	0.005						0.50	
		SFP	0.21	0.23	0.25	0.31	0.39	0.55	0.90	2.47	-							
50%	1	Airflow	0.253	0.206	0.154	0.038										0.19		
		SFP	0.12	0.15	0.20	0.83												
25%	1	Airflow	0.115													0.08		
		SFP	0.12															

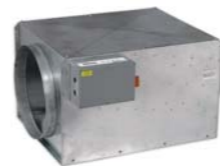
Sound Data

Speed	Test Mode	Octave Band Frequency SWL								dB(A) @3m
		63	125	250	500	1k	2k	4k	8k	
100%	Inlet	67.1	74.6	77.5	73.8	66.2	62.8	58.1	53.6	51
	Outlet	70.6	75.3	78.9	78.7	76.8	76.4	69.2	63.9	60.5
	Breakout	62.8	66.5	69.2	64	58.9	56	47.5	37.9	45.3
80%	Inlet	62.2	69.7	72.7	68.9	61.4	57.9	53.3	48.7	46.1
	Outlet	65.7	70.5	74.1	73.9	71.9	71.6	64.4	59.1	55.7
	Breakout	57.9	61.6	64.4	59.2	54.1	51.1	42.6	33.1	40.5
50%	Inlet	52	59.5	62.4	58.6	51.1	47.7	43	38.4	35.8
	Outlet	55.6	66	66.7	59.2	57.9	58.3	50	38.6	43.8
	Breakout	51.4	55.2	55.2	46.1	41.8	36.8	28.4	31.2	29.6
25%	Inlet	37	44.5	47.5	43.7	36.1	32.7	28	23.5	20.9
	Outlet	40.4	45.2	48.8	48.6	46.7	46.3	39.1	33.8	30.5
	Breakout	32.7	36.4	39.1	33.9	28.8	25.9	17.4	7.8	15.3



The Single Models

SENT400S & SENT400S/CP

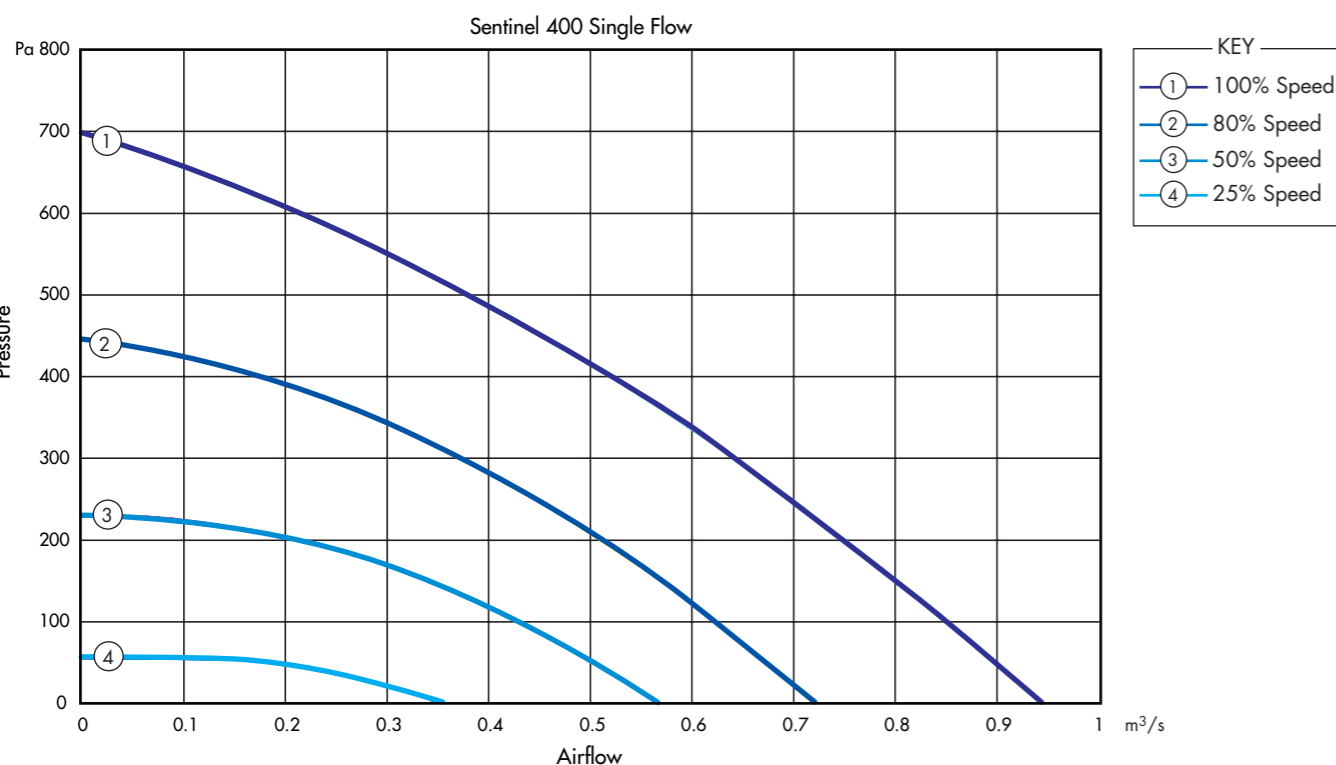


Performance Guide

Speed	Phase	Performance	Airflow, m ³ /s @ Pa														Amps FLC			
			0	25	50	100	150	200	225	250	300	350	400	425	450	500		550	600	
100%	1	Airflow	0.945	0.923	0.899	0.852	0.802	0.751	0.724	0.698	0.641	0.582	0.519	0.487	0.453	0.381	0.302	0.214	2.47	
		SFP	0.51	0.52	0.54	0.57	0.60	0.64	0.67	0.69	0.76	0.83	0.93	0.99	1.07	1.27	1.60	2.26		
80%	1	Airflow	0.72	0.697	0.673	0.623	0.569	0.51	0.478	0.445	0.372	0.285	0.174	0.098						1.80
		SFP	0.30	0.31	0.32	0.35	0.38	0.43	0.45	0.49	0.58	0.76	1.25	2.21						
50%	1	Airflow	0.566	0.535	0.503	0.43	0.341	0.214	0.089											0.59
		SFP	0.22	0.24	0.25	0.30	0.37	0.59	1.43											
25%	1	Airflow	0.353	0.288	0.177														0.13	
		SFP	0.05	0.06	0.10															

Sound Data

Speed	Test Mode	Octave Band Frequency SWL								dB(A) @3m
		63	125	250	500	1k	2k	4k	8k	
100%	Inlet	78	86.2	86.7	74.6	69.9	66.3	60.9	53.1	57.1
	Outlet	77.7	87	92.3	80.5	79.4	75.6	70.3	62.8	64.3
	Breakout	76.8	84.9	84.8	78.9	74	68.5	60.6	51.9	65.3
80%	Inlet	72	80	79.9	74.1	69.2	63.7	55.7	47.1	55.5
	Outlet	72.8	82.2	87.5	75.6	74.6	70.8	65.4	58	59.4
	Breakout	73.2	81.4	81.9	69.7	65.1	61.5	56	48.3	52.2
50%	Inlet	61.8	69.8	69.7	63.9	59	53.5	45.5	36.9	45.3
	Outlet	62.6	72	77.3	65.4	64.4	60.6	55.2	47.8	49.1
	Breakout	62.9	71.2	71.7	59.5	54.9	51.2	45.8	38.1	42
25%	Inlet	46.8	54.8	54.7	48.8	44	38.4	30.5	21.8	30.3
	Outlet	47.6	56.9	62.3	50.4	49.4	45.5	40.2	32.7	34.3
	Breakout	47.9	56.2	56.7	44.5	39.8	36.2	30.8	23.1	27



SENT500S & SENT500S/CP



Performance Guide

Speed	Phase	Performance	Airflow, m ³ /s @ Pa														Amps FLC			
			0	25	50	100	150	175	200	250	300	350	400	450	500	550		600	650	
100%	3	Airflow	1.489	1.46	1.43	1.37	1.307	1.275	1.242	1.173	1.101	1.024	0.943	0.855	0.759	0.653	0.531	0.383	2.10	
		SFP	0.60	0.62	0.63	0.66	0.69	0.70	0.72	0.77	0.82	0.88	0.95	1.05	1.18	1.38	1.69	2.34		
80%	3	Airflow	1.234	1.198	1.16	1.082	0.998	0.954	0.907	0.808	0.696	0.566	0.404	0.159						1.60
		SFP	0.32	0.33	0.34	0.37	0.40	0.41	0.44	0.49	0.57	0.70	0.98	2.48						
50%	3	Airflow	0.822	0.762	0.698	0.546	0.335	0.148											0.67	
		SFP	0.29	0.31	0.34	0.44	0.71	1.61												
25%	3	Airflow	0.449	0.312														0.23		
		SFP	0.10	0.15																

Sound Data

Speed	Test Mode	Octave Band Frequency SWL								dB(A) @3m
		63	125	250	500	1k	2k	4k	8k	
100%	Inlet	81.1	95.1	86.7	79.6	71.2	67.2	61.2	62.5	60.3
	Outlet	81.6	92.9	88	84.9	81.5	76	70.4	69.9	65.7
	Breakout	78.4	88.8	84.8	81.7	75.3	67.8	59.7	55.4	61.9
80%	Inlet	76.3	90.3	81.9	74.8	66.4	62.4	56.4	57.7	55.5
	Outlet	76.8	88.1	83.2	80.1	76.7	71.2	65.6	65.1	60.9
	Breakout	73.6	84	79.9	76.8	70.5	62.9	54.8	50.6	57
50%	Inlet	66.1	80.1	71.7	64.6	56.2	52.2	46.2	47.5	45.3
	Outlet	66.6	77.9	73	69.9	66.5	61	55.4	54.9	50.7
	Breakout	63.4	73.8	69.7	66.6	60.3	52.7	44.6	40.4	46.8
25%	Inlet	51	65	56.6	49.5	41.1	37.1	31.1	32.4	30.2
	Outlet	51.6	62.8	57.9	54.8	51.4	45.9	40.3	39.8	35.6
	Breakout	48.3	58.8	54.7	51.6	45.2	37.6	29.6	25.3	31.8

