

# Handdryers



10 Second Dry

## Jet Dry.

Automatic double sided high speed jet hand dryer.

- 10 second dry time.
- Lo-Carbon DC Motor, 750w
- Air speed 95m/s
- Unique "blue dry zone" indicator
- Antibacterial coating
- Heater Element 900-1300W, adjustable
- Antibacterial Dust filter
- 300x685x220mm (WxHxD)
- Weight 11kg
- **IPX4** rated

GEN



**Stock Ref**  
**447425**



10 Second Dry

## Tempest. Satin

Automatic hand dryer for heavy duty applications - 10 second drying time.

- Unique "blue dry zone" indicator
- Cover: Steel. Finish porcelain enamel coating
- Insulation Earthed Class 1
- 201 x 277 x 175 (WxHxD)
- Weight 6.6kg (packaged)
- Air flow 116m<sup>3</sup>/h
- Heater Element 450-900W, adjustable
- Infrared automatic operation
- 60 second auto shut off
- **IPX1** rated

GEN



**Models**  
Satin Stainless **439464**  
Polished Stainless **439463**  
Filter Assembly Pack **444959**  
Filter Replacement **444960**  
2 pack.



10 Second Dry

## Tempest.

Automatic hand dryer for heavy duty applications - 10 second drying time.

- Unique "blue dry zone" indicator
- Cover: Steel. Finish porcelain enamel coating
- Insulation Earthed Class 1
- 201 x 277 x 175 (WxHxD)
- Weight 6.6kg (packaged)
- Air flow 116m<sup>3</sup>/h
- Heater Element 450-900W, adjustable
- Infrared automatic operation
- 60 second auto shut off
- **IPX1** rated

GEN



**Stock Ref**  
**437231**



10 Second Dry

## Lo-Carbon eTempest

Automatic hand dryer for fast drying applications. 10 second drying time.

- Insulation Earthed Class 1
- Cover: Steel 1.2 mm thick, epoxy coated
- Dimensions: 250mm W x 180mm H x 138.5mm D
- Weight: 3.8Kg
- Heater element 500 watts
- Infra Red Automatic
- Rated at 1K -1.2 kW @ 230 V
- Airflow 113m<sup>3</sup>/h
- 60 seconds auto shut off
- **IPX1** rated

GEN



**Stock Ref**  
**444956**



## Ultradry. SX

Automatic 'no-touch', vandal resistant hand and face dryer for offices, shops, restaurants, pubs, clubs and hospitals. Fast drying feature.

- Cover: IM24 pressure die cast aluminium. Finish: epoxy/polyester powder coating. Motor: 5,500rpm, suppressed brushed motor. Insulation: earthed, Class I.
- 264 x 275 x 177mm (H x W x D).
- Weight: 6.0kg (6.6kg packed).
- Sound level: 79dB(A) at 1m.
- Rated at: 2.4kW at 230V.
- **IP24** Rated.
- BEAB Approved.

GEN



**Stock Ref**  
**20101800SX**



## Powerdry. SX

Push button operated hand and face dryer for heavy duty applications in public lavatories, factories, railway stations and schools, etc. Fast drying feature.

- Cover: IM24 pressure die cast aluminium. Finish: epoxy/polyester powder coating. Motor: 5,500rpm, suppressed brushed motor. Insulation: earthed, Class I.
- 264 x 275 x 177mm (H x W x D).
- Weight: 6.0kg (6.6kg packed).
- Sound level: 79dB(A) at 1m.
- Rated at: 2.4kW at 230V.
- **IP24** Rated.
- BEAB Approved.
- Supply voltage: 220-240V/1/50-60Hz

GEN



**Stock Ref**  
**20101600SX**



## Dryline +

Automatic 'no-touch' operation compact hand dryer. Suitable for smaller office washrooms, kitchens and clinics.

- Cover: ABS. Motor: 2450rpm shaded pole induction.
- Double insulated appliance.
- BEAB approved.
- 280 x 275 x 143mm (H x W x D).
- Weight: 2.97kg (3.3kg packed).
- Sound level: 46 dB(A) at 3m.
- Rated at: 1.7kW at 230V.
- Supply voltage: 220-240V/1/50Hz.
- **IP21** Rated

GEN



**Stock Ref**  
**453915**



### Turbodry® White Auto

Automatic hand & face dryer for heavy duty applications where a robust secure design is required.

- Cover: Steel. Finish porcelain enamel coating
- Insulation Earthed Class 1
- 248 x 284 x 202 (HxWxD)
- Weight 7.5kg
- Sound level 70dB(A) @1m
- Rated at 2.4kW @ 230 V
- **IP23** Rated

**Stock Ref**  
**435427**

GEN



### Turbodry® White Manual

Push button hand & face dryer for heavy duty applications where a robust secure design is required.

- Cover: Steel. Finish porcelain enamel coating
- Insulation Earthed Class 1
- 248 x 284 x 202 (HxWxD)
- Weight 7.5kg
- Sound level 70dB(A) @1m
- Rated at 2.4kW @ 230 V
- **IP23** Rated

**Stock Ref**  
**435424**

GEN



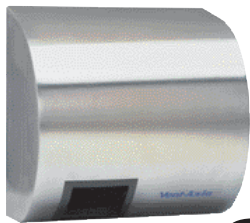
### Turbodry Chrome Auto

Automatic hand & face dryer for heavy duty applications where a robust secure design is required.

- Cover: Steel. Chrome
- Insulation Earthed Class 1
- 248 x 284 x 202 (HxWxD)
- Weight 7.5kg
- Sound level 70dB(A) @1m
- Rated at 2.4kW @ 230 V
- **IP23** Rated

**Stock Ref**  
**435430**

GEN



GEN

### Ultradry® SX Stainless Steel

Automatic 'no-touch' hand dryer specially designed for high performance hand drying in food preparation areas and hospital applications and eminently suitable for prestige installations. Fast drying feature. BEAB Approved.

- Cover: Satin polished stainless steel.
- 264 x 275 x 177mm (H x W x D).
- Weight: 6.0kg (6.6kg packed).
- Sound level: 79 dB(A) at 1m
- Rated at: 2.4kW at 230V.
- **IP24** Rated

**Stock Ref**  
**20101840SX**



GEN

### Prepdry-Stainless Steel

Designed for food preparation areas and hospital applications where the highest levels of hygiene have to be observed. Automatic 'no-touch' hand dryer. BEAB Approved.

- Cover: Satin polished stainless steel.
- Motor: External Rotor Brushless Motor 2700 rpm. Insulation: earthed Class 1.
- 280x270x148mm (HxWxD).
- Weight: 4.0kg (4.5kg packed).
- Sound level: 65 dB(A) at 1m
- Rated at: 2.0 kW at 240V.
- Supply voltage: 220-240V/1/50Hz.
- **IP24** Rated

**Stock Ref**  
**20101440**



GEN

### Professional E.

Automatic 'no-touch' hand dryer for smaller office washrooms, kitchens and clinics.

- Cover and base: high gloss, fire retardant ABS/polycarbonate alloy.
- Motor: 2700rpm external rotor, brushless motor.
- Double insulated appliance.
- 262 x 261 x 141mm (H x W x D).
- Weight: 3.09kg (3.52kg packed).
- Sound level: 65 dB(A) at 1m
- Rated at: 2.0 kW at 240V.
- **IP24** Rated.
- BEAB Approved.
- Supply voltage: 220-240V/1/50Hz

**Stock Ref**  
**20101402**



GEN

### Easy Dry Range

An economical ABS or Metal covered automatic dryer, designed for use in applications where good performance linked with price sensitivity is of paramount importance. S/GS Approved.

- 2500 rpm induction motor
- Insulation: Earthed Class 1.
- 225 x 275 x 160mm (H x W x D).
- Weight: 3.3kg (3.65kg packed), 4.7kg (5.5kg packed)
- Sound levels: 54dB(A) at 1m
- Rated at: 1.0kW, 1.5kW or 2kW at 240V.
- **IP22** Rated.
- Supply voltage: 220-240V/1/50Hz

**Models**      **Stock Ref**

GEN 1.0kW ABS      **427935**

BAS 1.5kW ABS      **436297**

BAS 2.0kW+Metal      **427936**

