



Gemini Twin Fans

Kitchen/Utility

Run & Standby Fans

Features & Benefits

- Suitable for kitchen and utility room applications.
- Comes complete with a plug in power pack.
- Duty sharing features supplied as standard.
- Meets Document F of the Building Regulations.
- Surface, flush and duct mounting versions are available.
- Overrun timer as standard
- Remote PIR's or humidity sensors can be installed

Ultra quiet ventilation

The Vent-Axia Gemini range of run and standby fans offers high performance double inlet forward curve fan motor impellers, typically suitable for high system resistance installation. In the event of failure the standby fan is operated, and visual fan failure indication (via integrated or optional remote indication light) is illuminated. The surface mounting model has a styled cover. For flush or duct mounting the power pack and back plate assembly is located within a galvanised steel casing and fitted with either a PVC cover for flush mounting or a galvanised steel cover for connection to ducts.

The Gemini range has an integrated overrun timer function fitted as standard, enabling versatile operation to **comply with the Building Regulations** Part F1 for internal rooms and Local Authority specification. The overrun timer can be manually adjusted between 1 and 20 minutes. (Units are factory set with the timer set to approximately 20 minutes).

All models incorporate a basic power pack which includes the motor housing, power on, fan run and fan fail neon indicator, which allows you to install the back plate at the

first fix stage and plug in the power pack when the unit is ready for use. The power pack is pre-wired and incorporates a plug in arrangement for fitting to the back plate.

Installation

The Vent-Axia Gemini range is designed for installation in kitchens and utility rooms. Surface, flush or duct mounting models are available. The units **meet Document F of the current Building Regulations.**

Models

Gemini Surface

A surface mounted twin fan model with 100mm spigot.

Model GTFS **Stock Ref** 457479

Gemini Recessed

A flush mounted twin fan model for recessed applications.

Model GTFF **Stock Ref** 457480

Gemini Duct

A twin fan ducted model for in-line applications.

Model GTFD **Stock Ref** 457481

Remote Indicator

See page 34 for detail.

Stock Ref 180010D

Dual sized spigot

Stock Ref GTFSP

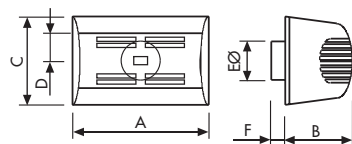
Performance

| Model | Extract Performance - FID | | Speed RPM | Max Watts | Max Amps |
|----------|---------------------------|---------------------|--------------|--------------|-------------|
| | m ³ /h | Sound dB(A) @ 3m | | | |
| Surface | 216 | 43 | 1370 | 57 | 0.19 |
| Recessed | 205 | 44 | 1370 | 57 | 0.19 |
| Duct | 195 | 46 | 1370 | 57 | 0.19 |

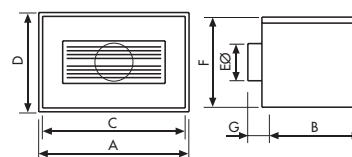
Dimensions (mm)

| | A | B | C | D | EØ | F | G |
|----------|-----|-----|-----|-----|----|-----|----|
| Surface | 347 | 170 | 224 | 69 | 99 | 35 | |
| Recessed | 385 | 233 | 366 | 255 | 98 | 230 | 35 |
| Duct | 366 | 233 | 230 | 36 | 98 | | |

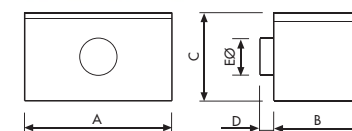
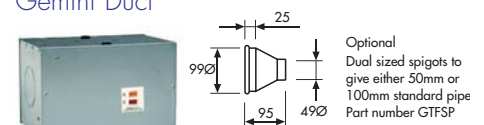
Gemini Surface



Gemini Recessed



Gemini Duct



Wall Kit Stock Ref:

254102 (White)
254100 (Brown)

DOM