

Gemini Twin Fans Kitchen Run & Standby Fans



Features and Benefits

- Suitable for kitchen and utility room applications.
- Comes complete with a plug in power pack.
- Duty sharing features supplied as standard.
- Meets Document F of the Building Regulations.
- Surface, flush and duct mounting versions are available.

Ultra quiet ventilation

The Vent-Axia Gemini range of run and standby fans offers high performance double inlet forward curve fan motor impellers, typically suitable for high system resistance installation. In the event of failure the standby fan is operated, and visual fan failure indication (via integrated or optional remote indication light) is illuminated. The surface mounting model has a styled cover. For flush or duct mounting the power pack and back plate assembly is located within a galvanised steel casing and fitted with either a PVC cover for flush mounting or a galvanised steel cover for connection to ducts.

The Gemini range has an integrated overrun timer function fitted as standard, enabling versatile operation to **comply with the Building Regulations** Part F1 for internal rooms and Local Authority specification. The overrun timer can be manually adjusted between 1 and 20 minutes. (Units are factory set with the timer set to approximately 20 minutes).

All models incorporate a basic power pack which includes the motor housing, power on, fan run and fan fail neon indicator, which allows you to install the back plate at the first fix stage and plug in the power pack when the unit is ready for use. The power pack is pre-wired and incorporates a plug in arrangement for fitting to the back plate.

Installation

The Vent-Axia Gemini range is designed for installation in kitchens and utility rooms. Surface, flush or duct mounting models are available. The units **meet Document F of the current Building Regulations.**

Models

Gemini Surface -

A surface mounted twin fan model with 100mm spigot.

Model GTFS **Stock Ref** 457479

Gemini Recessed -

A flush mounted twin fan model for recessed applications.

Model GTFF **Stock Ref** 457480

Gemini Duct -

A twin fan ducted model for in-line applications.

Model GTFD **Stock Ref** 457481

Remote Indicator -

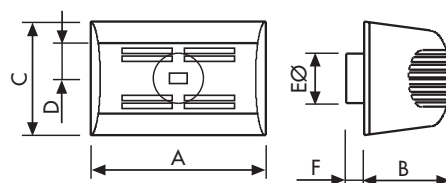
See page 24 for detail.

Stock Ref 180010D

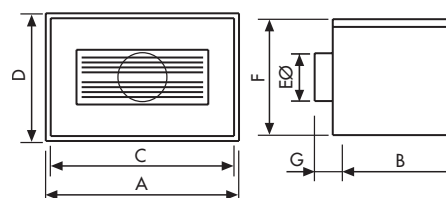
Dimensions

	A	B	C	D	EØ	F	G
Surface	347	170	224	69	99	35	
Recessed	385	233	366	255	98	230	35
Duct	366	233	230	36	98		

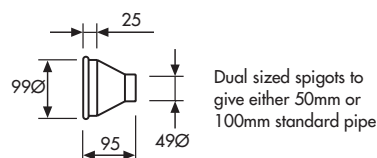
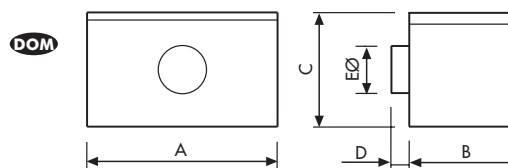
Duet Surface



Duet Recessed



Duet Duct



Performance

Models	Extract Performance - FID m³/h	Sound dB(A) @ 3m	Speed RPM	Max Watts	Max Amps
GTFS - Surface	216	43	1370	57	0.19
GTFF - Flush	205	44	1370	57	0.19
GTFD - Duct	195	46	1370	57	0.19

Wall Kit (see page 115)