



# Cooker Hoods

### Features & Benefits

- A choice of four styles for domestic applications.
- Wall, ceiling or cabinet fixed.
- Compatible with flat ducting or Vent-Axia aluminium flexible ducting.
- All models are provided with a charcoal filter and washable grease filter as standard.
- All models are fitted with mains lead, built-in lighting and choice of 3 speeds.

### Models

#### Genova



DOM

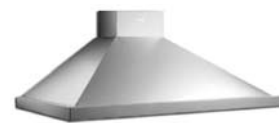
An cooker hood with 'flip front' glass visor designed to be wall-mounted or mounted beneath a top cabinet. Offering three speeds with extract rates of 100/160/220m<sup>3</sup>/h.

**Stock Ref**  
**120801A**

#### Dimensions

W	D	H
600	470	150

#### Rimini/Milano/Roma



DOM

The Rimini (500mm width), Milano (600mm width) and Roma (900mm width) are stainless steel chimney cooker hoods with an extending chimney to fit varying ceiling heights. Offering three speeds with extract rates of 340/420/460m<sup>3</sup>/h.

**Stock Ref**  
**427166A - Rimini**  
**120841A - Milano**  
**120851A - Roma**

#### Dimensions (mm)

Model	W	D	H
Rimini	500	500	1115
Milano	500	500	1115
Roma	500	500	1115

### Kitchen Ventilation

Vent-Axia offers a range of cooker hoods for the removal of cooking odours and steam at source in the domestic kitchen. Each model is designed to provide the extraction levels necessary **to comply with Building Regulation requirements** for kitchens with ducted outlets plus models that provide higher outputs for busier kitchens.

A choice of styles is available to include wall, or cabinet fixed models to provide integrated ventilation in any modular fitted kitchen from a terraced galley kitchen to the most extensive layouts. Models are available that can re-circulate or extract with the use of ducting.

The Building Regulations for the mechanical ventilation of kitchens with open able windows in dwellings require that extractor hoods should be capable of extracting at a rate of 30 l/s (108m<sup>3</sup>/h).

When used with ducting, the resistance of the entire system should be considered so that the required performance is achieved. Extractor hoods should not be sited where ambient temperatures are likely to exceed +50°C.

#### Napoli



DOM

An integrated cooker hood designed to accept a kitchen cupboard door-panel in matching height and finish to existing units. Offering three speeds with extract rates of 120/170/220m<sup>3</sup>/h.

**Stock Ref**  
**120811A**  
**436084A** (Silver)

#### Dimensions

W	D	H
600	275	450

**Extractor hoods are not suitable for use above an eye level grill. Must be mounted between 760mm and 900mm above the hob. Do not flambé underneath a hood. When frying, NEVER leave the pan unattended in case of fire.**

**Vent-Axia®**  
**basics**

Basic, Simple, Solution



**Bathroom/Toilet**



**BAS100B** BAS  
Unshuttered axial fan for remote or light switch operation  
**Stock Ref**  
**436519**

**BAS100P** BAS  
Unshuttered axial fan with integral pullcord  
**Stock Ref**  
**436520**

**BAS100T** BAS  
Unshuttered axial fan with adjustable overrun timer  
**Stock Ref**  
**436521**



**BAS100SLB** BAS  
Single speed axial fan with integral back draught shutter for remote or light switch operation  
**Stock Ref**  
**436530**

**BAS100SLT** BAS  
Single speed axial fan with electronic overrun timer – up to 30 mins and integral back draught shutter  
**Stock Ref**  
**436532**

**Kitchen**



**BAS150B** BAS  
Unshuttered axial fan designed for remote or light switch operation  
**Stock Ref**  
**436525**

**BAS150P** BAS  
Unshuttered axial fan with integral pullcord  
**Stock Ref**  
**436526**

**BAS150T** BAS  
Unshuttered axial fan with adjustable overrun timer  
**Stock Ref**  
**436527**



**BAS150SLB** BAS  
Axial fan with integral back draught shutter for remote or light switch operation  
**Stock Ref**  
**436533**

**BAS150SLT** BAS  
Axial fan with electronic overrun timer – and integral back draught shutter  
**Stock Ref**  
**436535**

**Shower Fan & Kit**



**Minivent SK** BAS  
Single speed 100mm in-line axial fan  
**Stock Ref**  
**248710B**

**Minivent SKT** BAS  
Single speed 100mm in-line axial fan with integral adjustable overrun timer - up to 30 mins  
**Stock Ref**  
**248810B**

The kit consists of a IP44 In-Line fan, a white ceiling grille and spigot, 3 meters of flexible duct and an external louvre for soffit or wall mounting.



**Shower Fan & Light Kit** BAS  
Basic  
**Stock Ref**  
**432504B**

Timer  
**Stock Ref**  
**432505B**

The kit consists of a 100mm axial in-line fan 3 meters of flexible ducting, an exterior grille, light transformer and 12V 35W dichroic halogen light assembly. IP44 rated.